

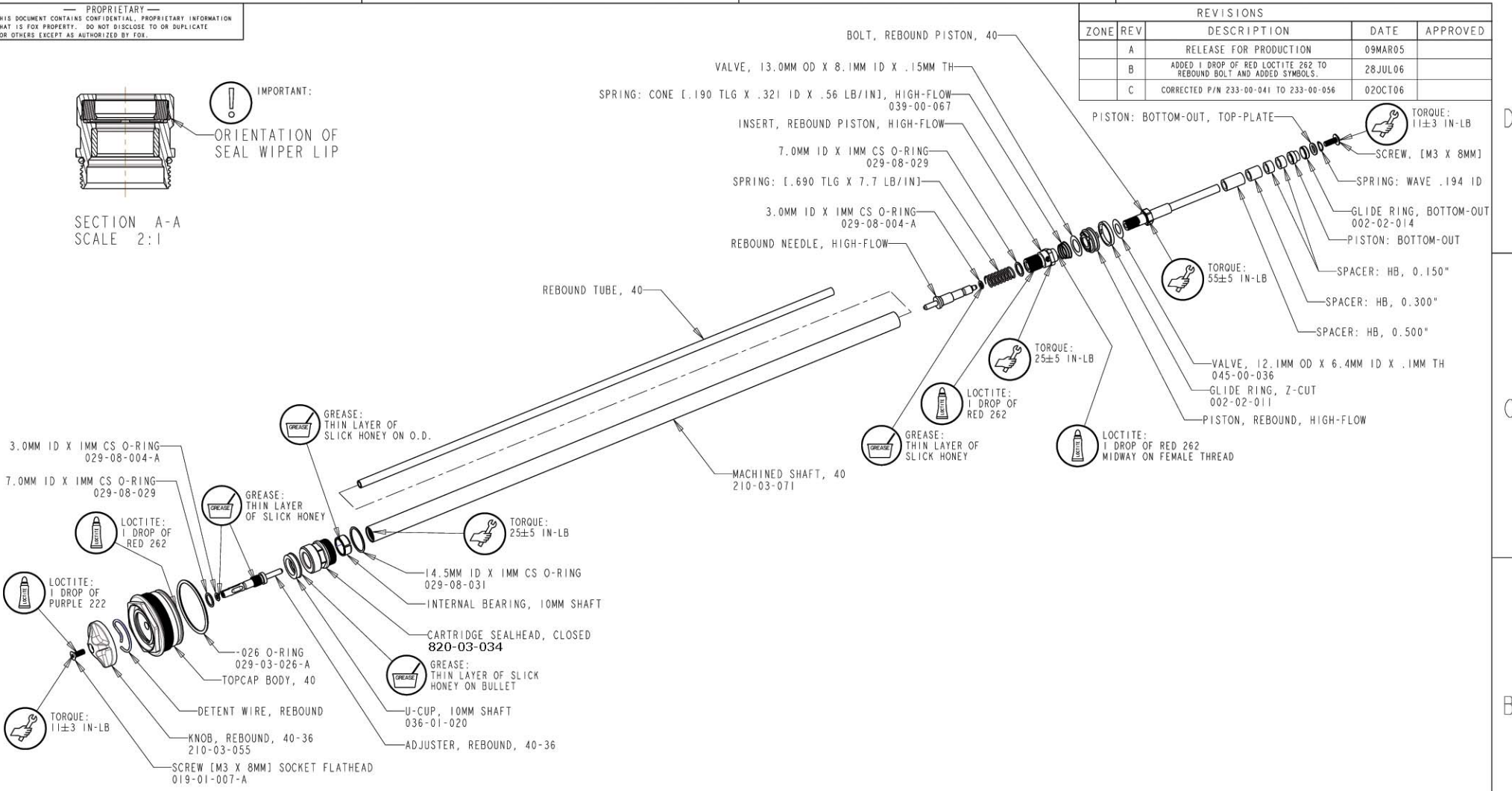
PROPRIETARY  
THIS DOCUMENT CONTAINS CONFIDENTIAL, PROPRIETARY INFORMATION  
THAT IS FOX PROPERTY. DO NOT DISCLOSE TO OR DUPLICATE  
FOR OTHERS EXCEPT AS AUTHORIZED BY FOX.



IMPORTANT:  
ORIENTATION OF  
SEAL WIPER LIP

SECTION A-A  
SCALE 2:1

REVISIONS				
ZONE	REV	DESCRIPTION	DATE	APPROVED
	A	RELEASE FOR PRODUCTION	09MAR05	
	B	ADDED 1 DROP OF RED LOCTITE 262 TO REBOUND BOLT AND ADDED SYMBOLS.	28JUL06	
	C	CORRECTED P/N 233-00-041 TO 233-00-056	02OCT06	



40 Cartridge Top Cap Assembly PN 820-05-020

NOTE: PN 820-03-063-NS is not sold as a complete assembly.  
Part numbers shown on drawing can be purchased.

ITEM NO.	QTY.	PART NUMBER	DESCRIPTION	MATERIAL SPEC
UNLESS OTHERWISE SPECIFIED DIMENSIONS ARE IN INCHES [MM]		PER ASME Y14.5M 1994		
TOLERANCES ARE:		<b>FOX Factory, Inc.</b> 130 Hanger Way, Watsonville, CA 95076 USA, Ph 831-768-1100, Fax 831-768-9312		
DECIMALS	.XX [X] ± .01 [0,25]	APPROVALS	DATE	CART. SUB-GROUP: 2006-2007 40 DAMPER
ANGLES	± 1°	DWN. BY	28OCT04	
.XXX [XX] ± .005 [0,13]		CHK. BY	28OCT04	
THIRD ANGLE PROJECTION		ENG.	28OCT04	
		MFG.		SIZE C
		ADD.		PART NO. 820-03-063-NS
			PLOT SCALE 0.580	SHEET 1 OF 1