

4

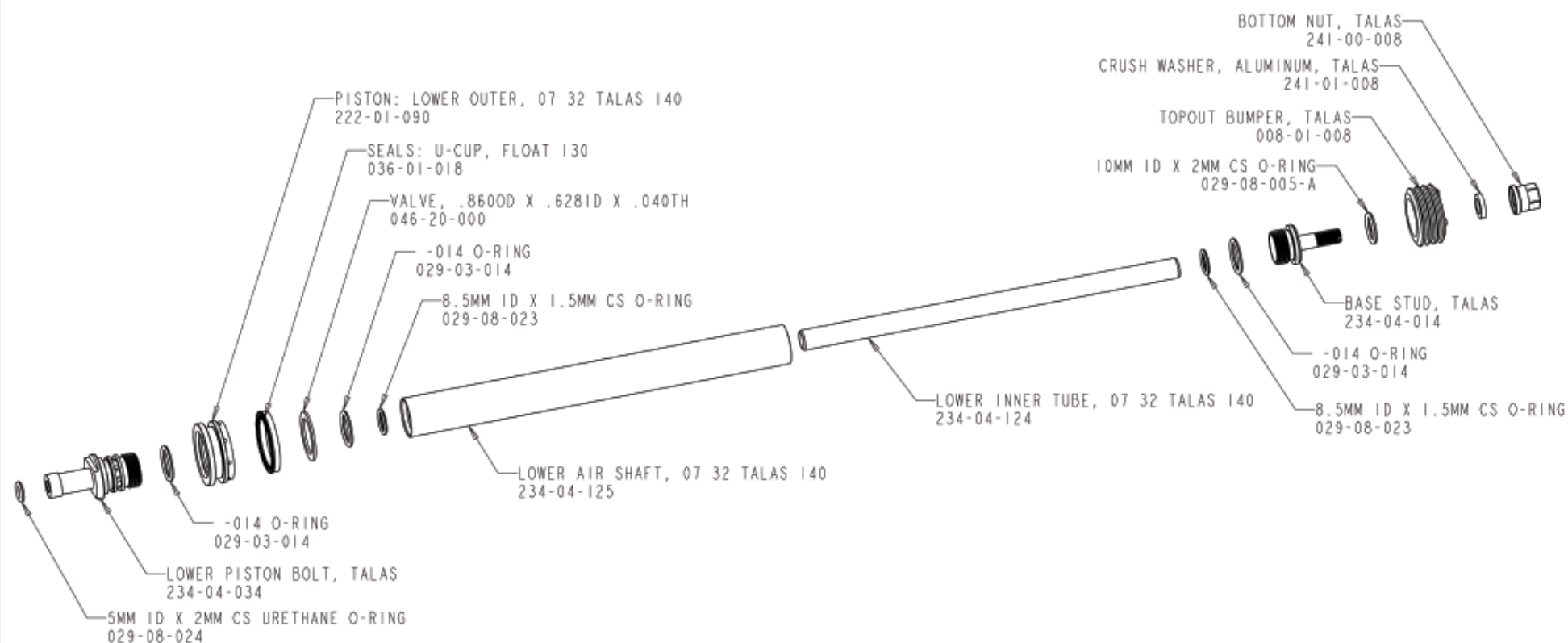
3

2

1

— PROPRIETARY —
THIS DOCUMENT CONTAINS CONFIDENTIAL, PROPRIETARY INFORMATION
THAT IS FOR PROPRITY. DO NOT DISCLOSE TO OR DUPLICATE
FOR OTHERS EXCEPT AS AUTHORIZED BY FOX.

REVISIONS				
ZONE	REV	DESCRIPTION	DATE	APPROVED
	A	RELEASE FOR PRODUCTION	08DEC05	



NOTE: ORDER ONLY AS COMPLETE UNIT

PN 820-02-030

ITEM NO.	QTY.	PART NUMBER	DESCRIPTION	MATERIAL SPEC
		PER ASME Y14.5M 1994		
		UNLESS OTHERWISE SPECIFIED DIMENSIONS ARE IN INCHES (MM)		
		TOLERANCES ARE:		
DECIMALS	ANGLES	APPROVALS	DATE	
.XX (.X) ± .01 (0.25)	°	BY B. BECKER	08DEC05	
.XXX (.XX) ± .005 (0.13)		CHK BY B. BECKER	08DEC05	
		TRIAL ANGLE PROJECTION	DATE	
		BY B. BECKER	08DEC05	
		MFG.		
		APP.		
		128 Hanger Way, Watsonville, CA 94076 USA, Ph 831-768-1100, Fax 831-768-9312		
		FOX Factory, Inc.		
		07 32 TALAS 140 LOWER AIR SHAFT ASSY		
		SIZE	PART NO.	
		C	820-02-030	
		PLOT SCALE: 0.75:1	SHEET 1 OF 1	

4

3

2

1