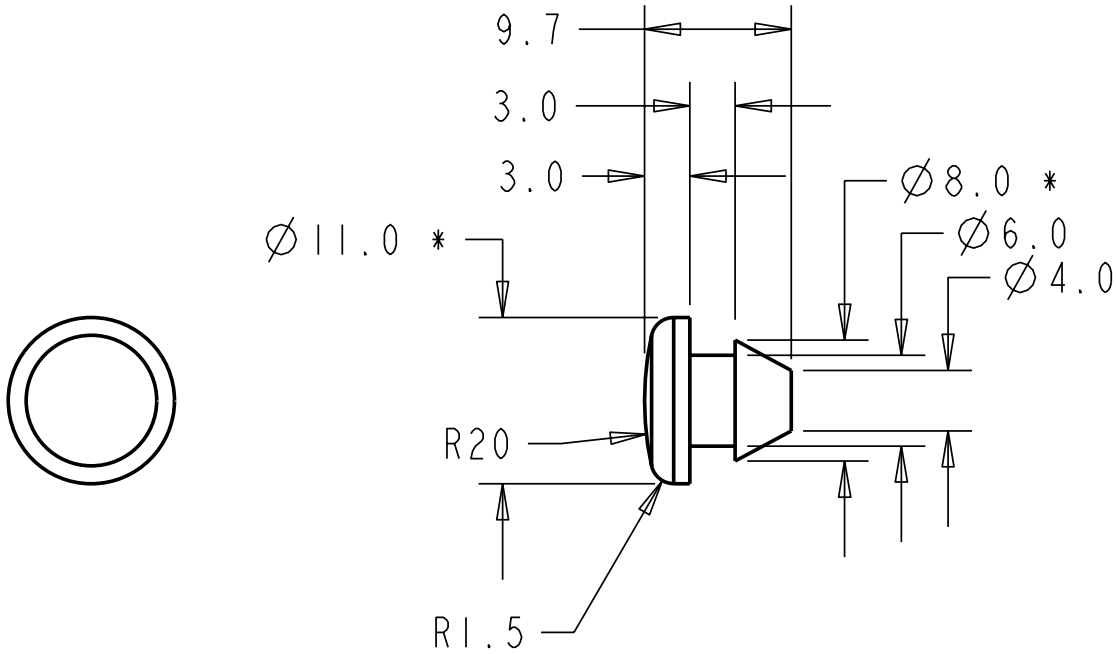


— PROPRIETARY —  
 THIS DOCUMENT CONTAINS CONFIDENTIAL, PROPRIETARY INFORMATION  
 THAT IS FOX RACING SHOX PROPERTY. DO NOT DISCLOSE TO OR  
 DUPLICATE FOR OTHERS EXCEPT AS AUTHORIZED BY FOX RACING SHOX.

REVISIONS				
ZONE	REV	DESCRIPTION	DATE	APPROVED
	A	RELEASE FOR TOOLING	05JAN01	



NOTES: (UNLESS OTHERWISE SPECIFIED)

- 1 MATERIAL: NITRILE BUTADIENE RUBBER, SHORE A 60±5
- 2. EDGES TO HAVE STRAIGHTNESS TOLERANCE OF 0.13MM PER INCH, NOT TO EXCEED 0.38MM OVER THE ENTIRE SURFACE.
- 3. TEXTURE TO BE SMOOTH ON ALL SURFACES.
- 4. STARRED (\*) DIMENSIONS ARE CRITICAL AND NOTED FOR QC INSPECTION.
- 5. GATE TO BE FLUSH +/- 0.50MM.
- 6. FLASH NOT TO EXCEED 0.10MM.

		COMPRESSION MOLDED RUBBER PLUG		I	
ITEM NO.	QTY.	PART NUMBER	DESCRIPTION	MATERIAL SPEC	
UNLESS OTHERWISE SPECIFIED DIMENSIONS ARE IN MM.			PER ANSI Y14.5M 1994	<b>FOX Factory, Inc.</b> 130 Hangar Way, Watsonville, CA 94076 USA, Ph 831-768-1100, Fax 831-768-9312	
TOLERANCES ARE:			APPROVALS	DATE	FASTENER, CUSTOM: PLUG [M8 BORE, 11MM OD X 9.7MM TLG] NBR DURO A 60
DECIMALS .X ± 0.25			DWN. BY B. BECKER	05JAN01	
ANGLES ± 1°			CHR. BY B. BECKER	05JAN01	
.XX ± 0.13			THIRD ANGLE PROJECTION	ENG. B. BECKER	05JAN01
			MFG.	SIZE A	PART NO. 019-03-000-A
DO NOT SCALE DRAWING			ADD.	PLOT SCALE 2:1	SHEET 1 OF 1